



House & Land Package

From **\$985,000***

Between 2,500

4 3 3

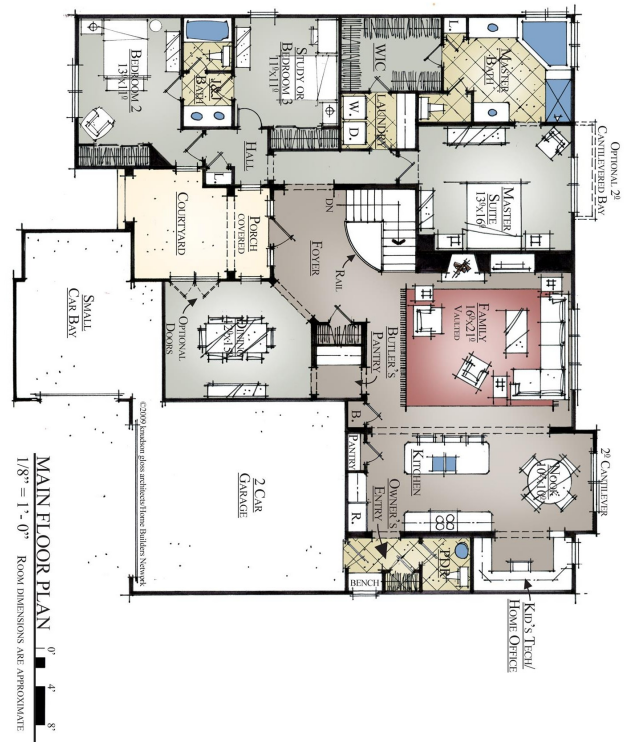
83 Conifer Dr, Evergreen

Floor Area: 2500 sqft Land Area: 2.47 acres

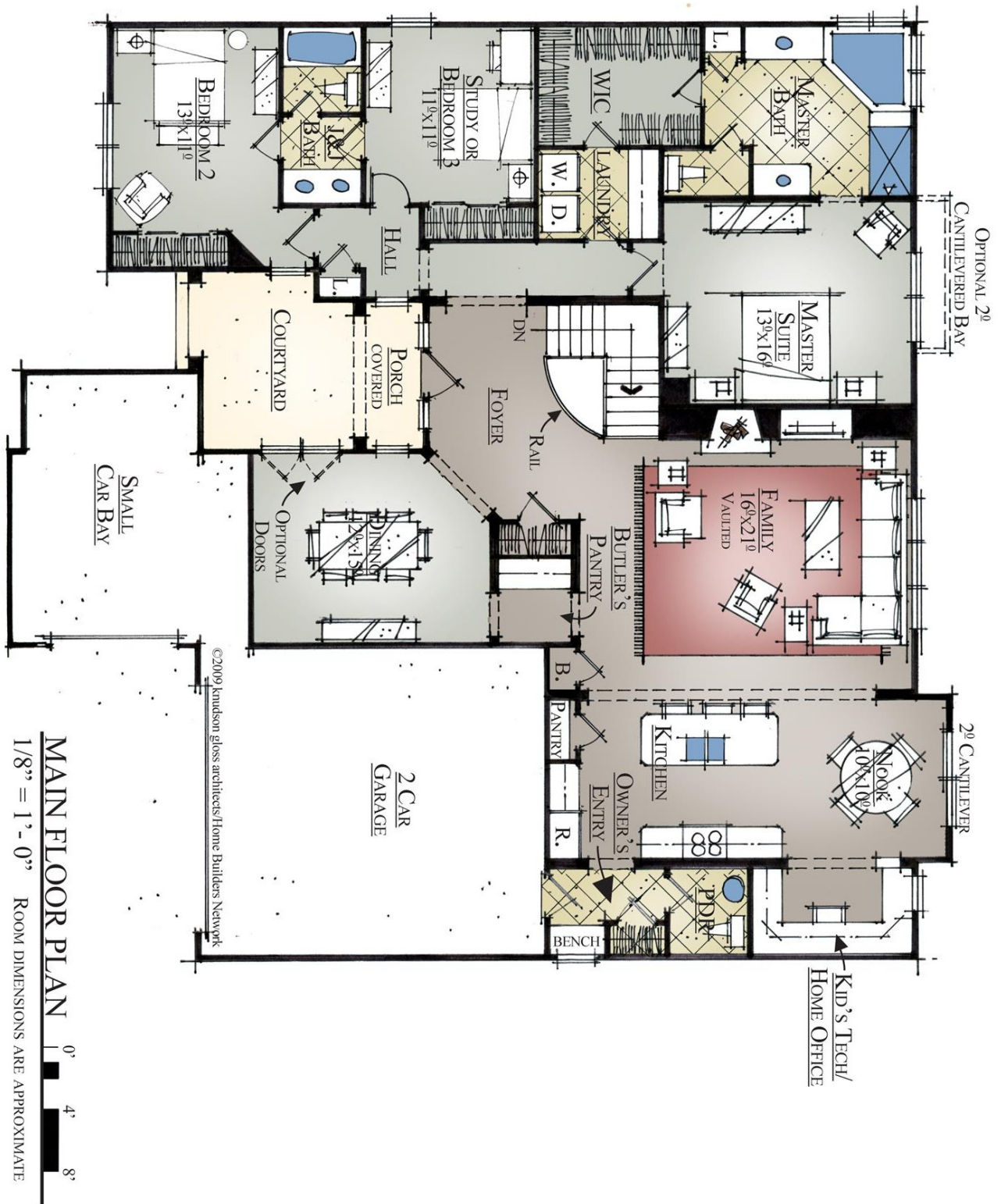
Contact **970.631.9081**

Inclusions:

- + Mountain Views
- + Walkout Basement
- + Mud Room
- + Start to Finish Design & Construction
- + Fully Customizable



NOTE: Images may depict landscaping and upgraded fixtures, features, facades or finishes and other items which are not included in the prices stated or not supplied by G.J. Gardner Homes. For availability and pricing of these items please discuss with your new home sales consultant.



Package price is based on Between 2,500 standard floor plan and standard elevation (may be smaller than elevation shown). Package may be subject to developer's design review panel, final regulatory approval and G.J. Gardner Homes purchase processes. Package price excludes any taxes, legal fees, and closing costs. Prices are current as of the date of printing. Prices may change without notice. Packages are subject to availability. Package subject to two separate contracts relating to the building and the land respectively. Photographs may depict fixtures, finishes and features not supplied by G.J. Gardner Homes. Excluded items include but are not limited to landscaping items such as planter boxes, retaining walls, water features, pergolas, screens, driveways and decorative items such as fencing and outdoor kitchens or barbeques. Photographs may also depict inclusions not forming part of the standard design and which may be subject to additional costs. This design and illustration remains the property of G.J. Gardner Homes and may not be reproduced in whole or in part without written consent. For detailed home pricing, please talk to a New Homes Consultant or visit our website at <https://www.gjgardner.com/house-and-land-pricing/>. Adams County d.b.a G.J. Gardner Homes 12001 Tejon Street; Suite 110, Westminster, Colorado, 80234, USA.