



House & Land Package

From **\$1,166,026***

Sanibel 1900

4 Beds | 3 Baths | 3 Car

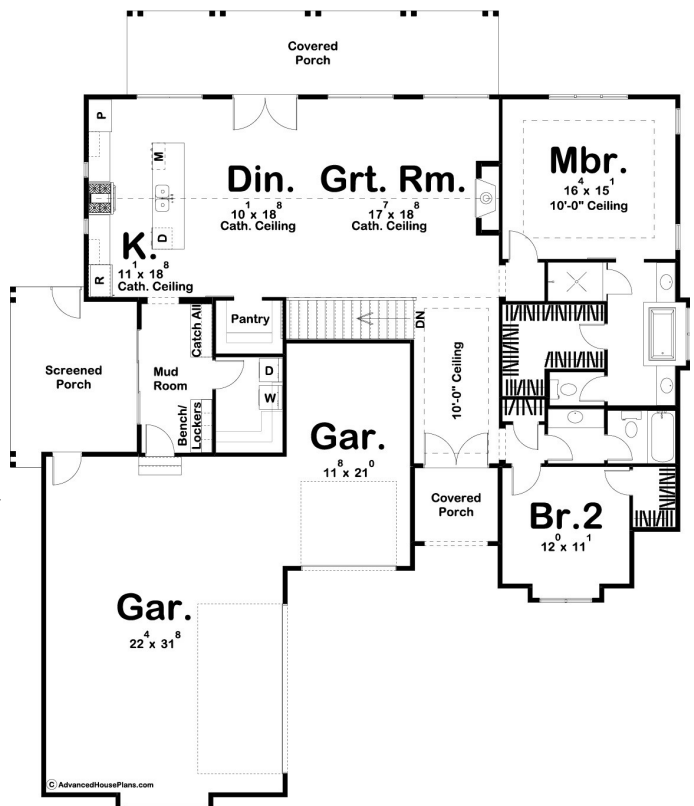
11516 Bison Meadows, Colorado Springs

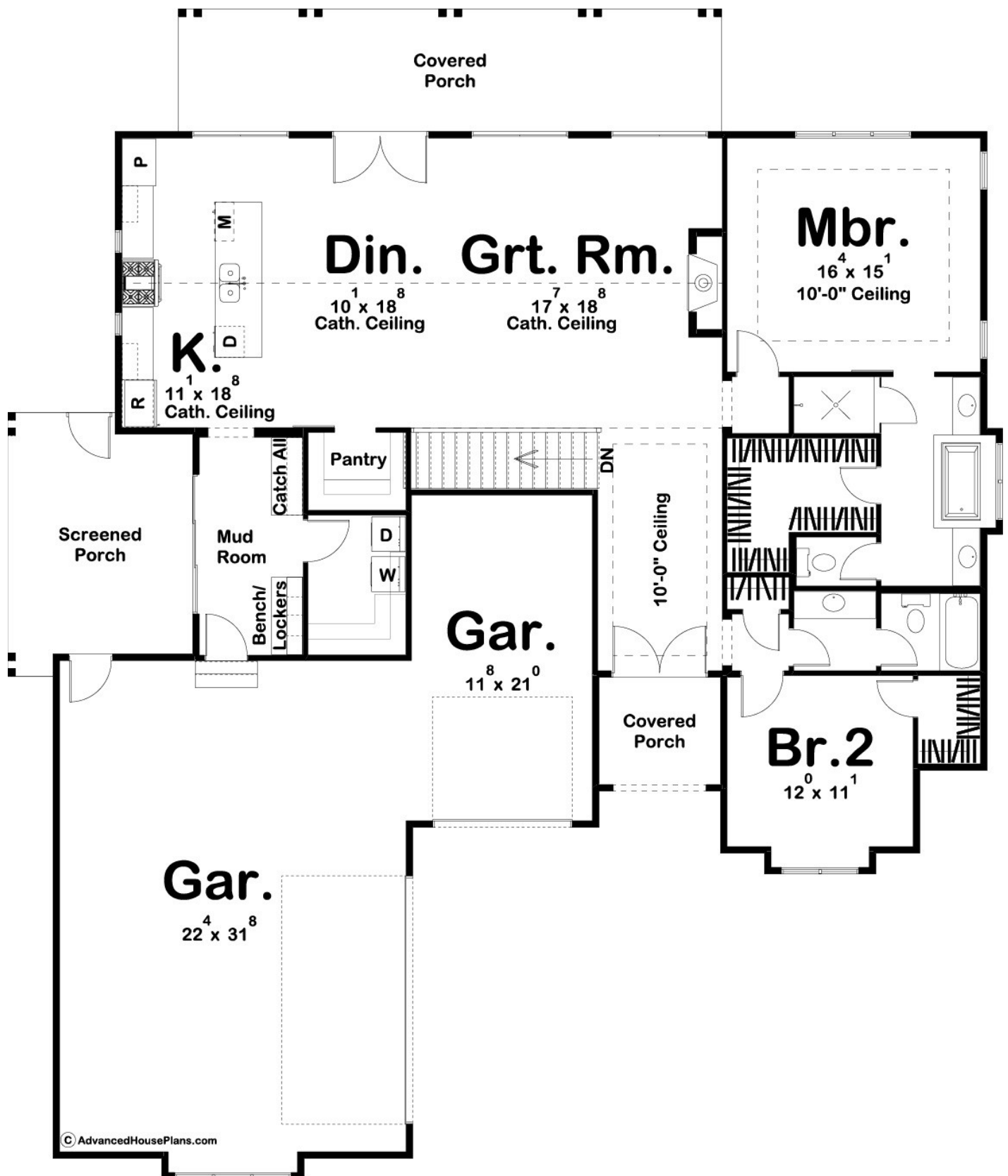
Land Area: 126759 sqft

Contact Kara Baretich on 7192163266

Inclusions:

+ 4 Total Bedrooms- 2 bedrooms on Main, 2 in Basement, 3 Total Baths 1200 SF Finished in Basement. Total 3100 SF





Package price is based on Sanibel 1900 standard floor plan and standard elevation (may be smaller than elevation shown). Package may be subject to developer's design review panel, final regulatory approval and G.J. Gardner Homes purchase processes. Package price excludes any taxes, legal fees, and closing costs. Prices are current as of April 25, 2024. Prices may change without notice. Packages are subject to availability. Package subject to two separate contracts relating to the building and the land respectively. Photographs may depict fixtures, finishes and features not supplied by G.J Gardner Homes. Excluded items include but are not limited to landscaping items such as planter boxes, retaining walls, water features, pergolas, screens, driveways and decorative items such as fencing and outdoor kitchens or barbeques. Photographs may also depict inclusions not forming part of the standard design and which may be subject to additional costs. This design and illustration remains the property of G.J Gardner Homes and may not be reproduced in whole or in part without written consent. For detailed home pricing, please talk to a New Homes Consultant or visit our website at <https://www.gjgardner.com/house-and-land-pricing/>. Structure Custom Builds, LLC d.b.a G.J. Gardner Homes - Colorado Springs. Builders License 24418.