



House & Land Package

From **\$1,624,538***

Bristol 3208

4 Beds | 3.5 Baths | 3 Car

12960 Woodridge Drive, Longmont

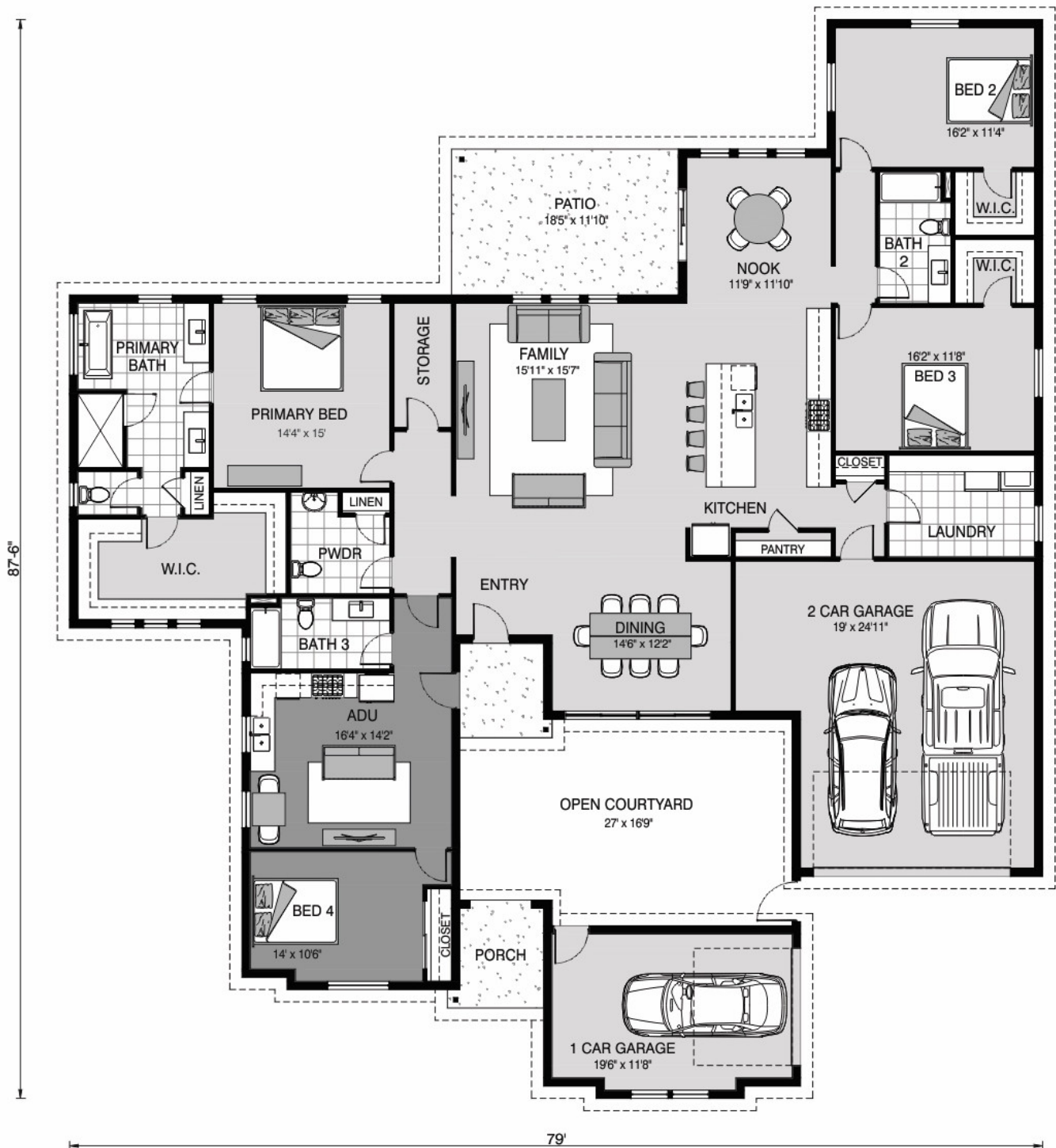
Land Area: 49852 sqft

Contact **Gabby Zeidler** on 970-222-4262

Inclusions:

- + Price Includes Concrete Tile Roofing, Stucco and Wood Garage Doors
- + Price Includes Exterior Chimney Per The Farm At Woodridge HOA Requirement
- + Price Includes Landscaping Allowance \$25,000
- + Price Includes Upgraded Appliance Package
- + Price Includes Interior Upgrade Allowance \$50,000





Main Level

Package price is based on Bristol 3208 standard floor plan and standard elevation (may be smaller than elevation shown). Package may be subject to developer's design review panel, final regulatory approval and G.J. Gardner Homes purchase processes. Package price excludes any taxes, legal fees, and closing costs. Prices are current as of April 27, 2024. Prices may change without notice. Packages are subject to availability. Package subject to two separate contracts relating to the building and the land respectively. Photographs may depict fixtures, finishes and features not supplied by G.J Gardner Homes. Excluded items include but are not limited to landscaping items such as planter boxes, retaining walls, water features, pergolas, screens, driveways and decorative items such as fencing and outdoor kitchens or barbeques. Photographs may also depict inclusions not forming part of the standard design and which may be subject to additional costs. This design and illustration remains the property of G.J Gardner Homes and may not be reproduced in whole or in part without written consent. For detailed home pricing, please talk to a New Homes Consultant or visit our website at <https://www.gjgardner.com/house-and-land-pricing/>. GJ Gardner Homes-Adams County Inc. d.b.a G.J. Gardner Homes - Adams County. Builders License 277438960.