



House & Land Package

From **\$1,038,539***

Carlisle 2089

5 Beds | 3 Baths | 2 Cars

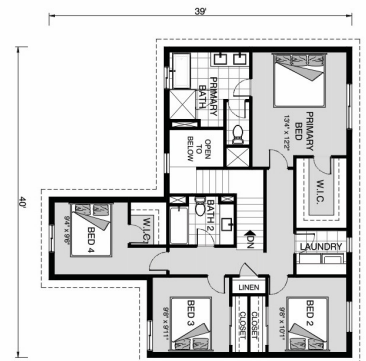
6394 S Cherry Ave, Fresno

Land Area: 174240 sqft

Contact **Leslie Vazquez** on +15597090441

Inclusions:

- + 2-10 Homebuyers Warranty
- + Quartz Countertops in Kitchen and Bathrooms
- + Whirlpool Stainless Steel Appliances
- + Progress Lighting Throughout





Package price is based on Carlisle 2089 standard floor plan and standard elevation (may be smaller than elevation shown). Package may be subject to developer's design review panel, final regulatory approval and G.J. Gardner Homes purchase processes. Package price excludes any taxes, legal fees, and closing costs. Prices are current as of January 9, 2026. Prices may change without notice. Packages are subject to availability. Package subject to two separate contracts relating to the building and the land respectively. Photographs may depict fixtures, finishes and features not supplied by G.J. Gardner Homes. Excluded items include but are not limited to landscaping items such as planter boxes, retaining walls, water features, pergolas, screens, driveways and decorative items such as fencing and outdoor kitchens or barbecues. Photographs may also depict inclusions not forming part of the standard design and which may be subject to additional costs. This design and illustration remains the property of G.J. Gardner Homes and may not be reproduced in whole or in part without written consent. For detailed home pricing, please talk to a New Homes Consultant or visit our website at <https://www.gjgardner.com/house-and-land-pricing/>. John and Brenda Jackson Sole Proprietorship d.b.a G.J. Gardner Homes Selma.