

Regis 2676

 3
Bedrooms

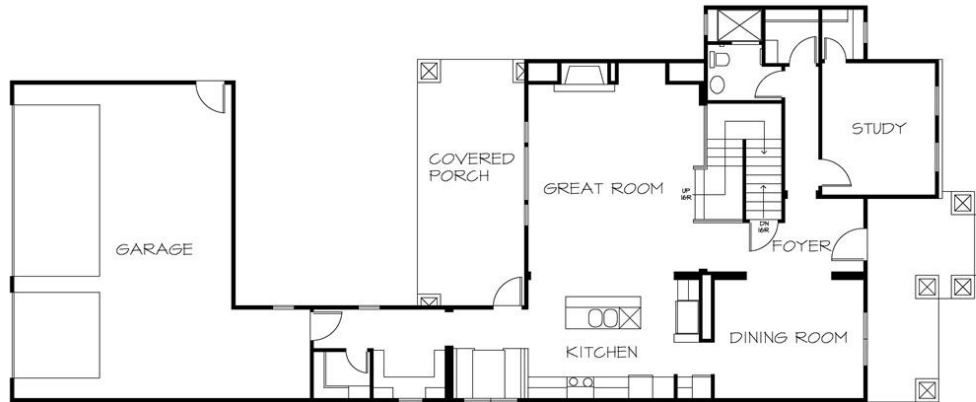
 3
Baths

 2
Garage

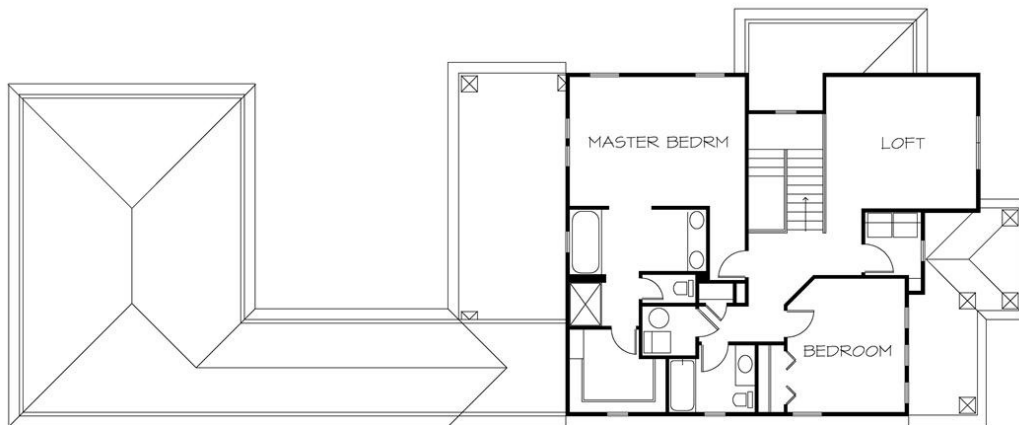
Living sq. ft.

2676ft²

From **G.J. Gardner** HOMES



MAIN FLOOR PLAN



UPPER FLOOR PLAN

Elevations



Artist's impression only,
furniture not included.

Disclaimer: Copyright © G.J. Gardner Homes. Whilst all details have been carefully prepared and are believed to be correct, no warranty can be given either expressly or implied by G.J. Gardner Homes. Intending purchasers must rely on their own enquiries. Correct at time of print – April 2011.

www.gjgardner.com